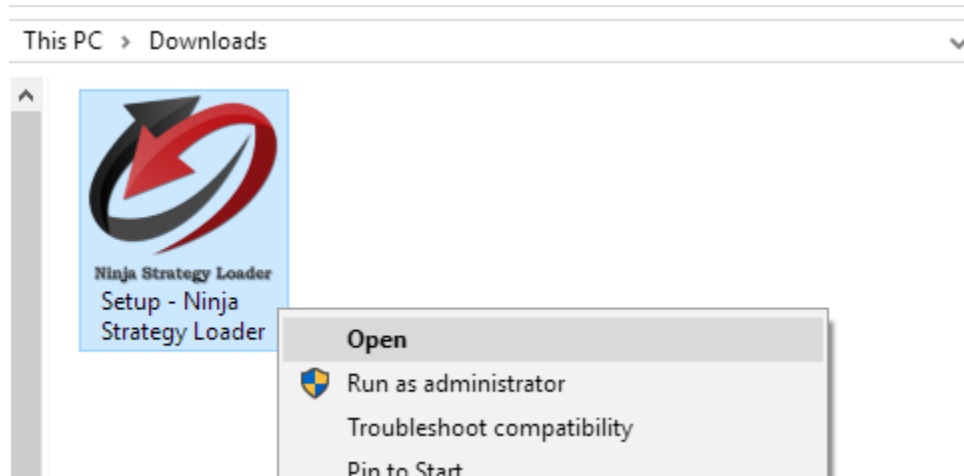


How to install and use Ninja Strategy Loader

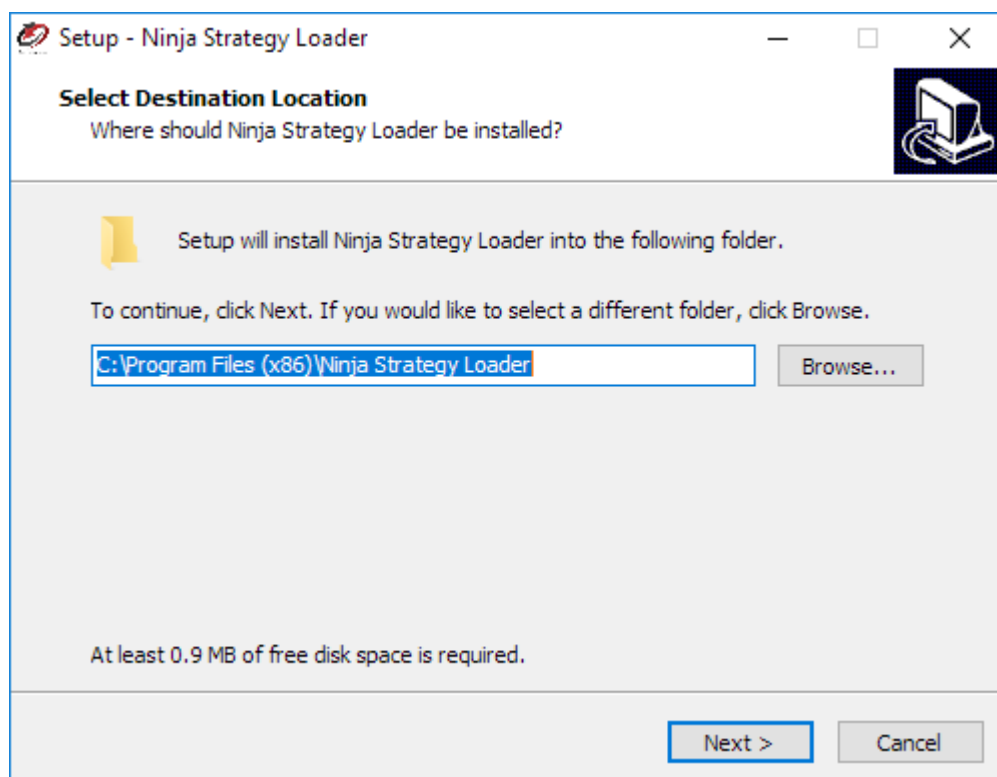
1. Install Setup – Ninja Strategy Loader

Please find your Setup provided when you download the product Ninja Strategy Loader (executable file). Right click on it and select open to run.



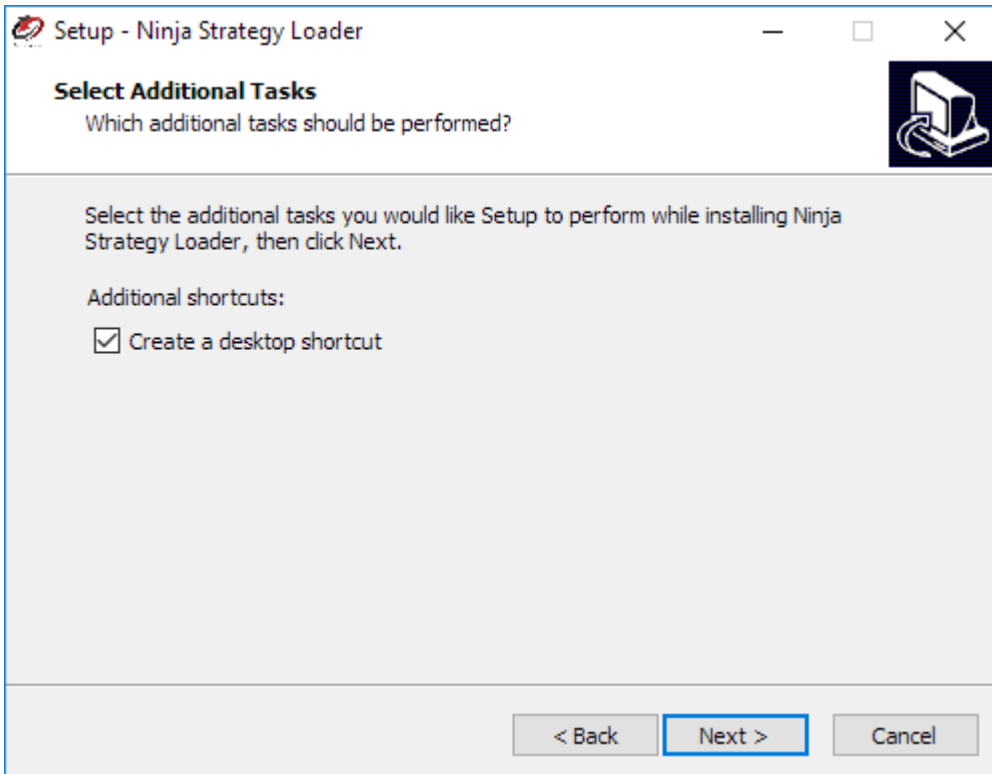
1. Select Destination Folder

- Setup will be install into the default destination folder.
- If you would like to select a different folder, click Browse.
- To continue, click Next.



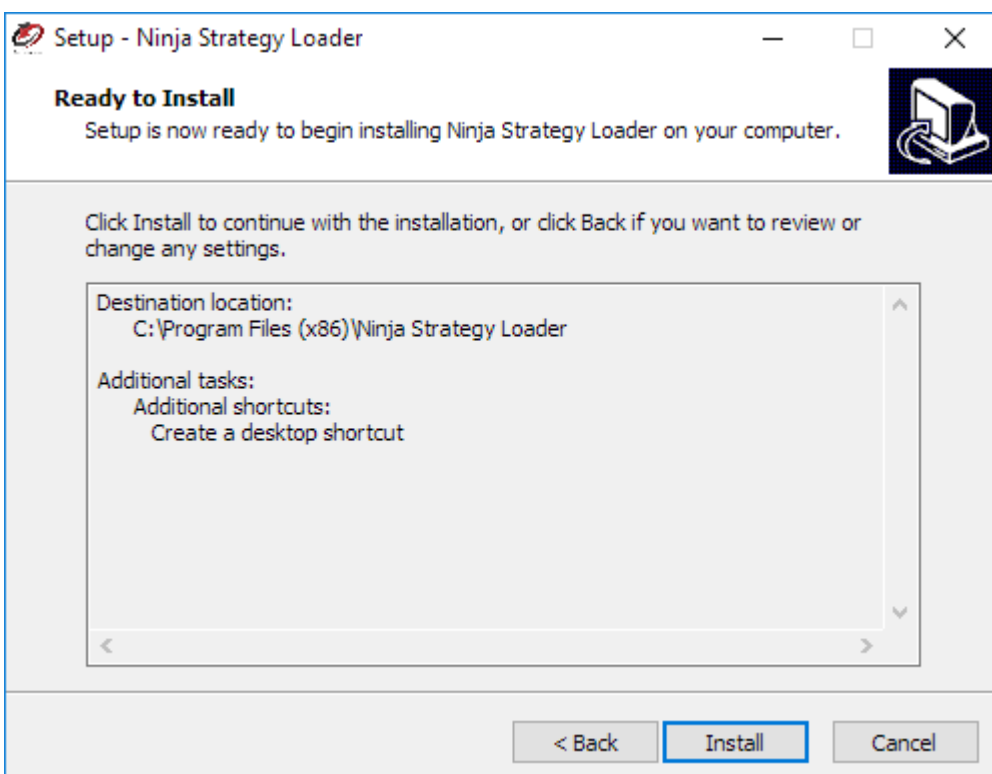
2. Select Additional Tasks

- Put a check on the box to create a desktop shortcut.
- Click Next, to continue.



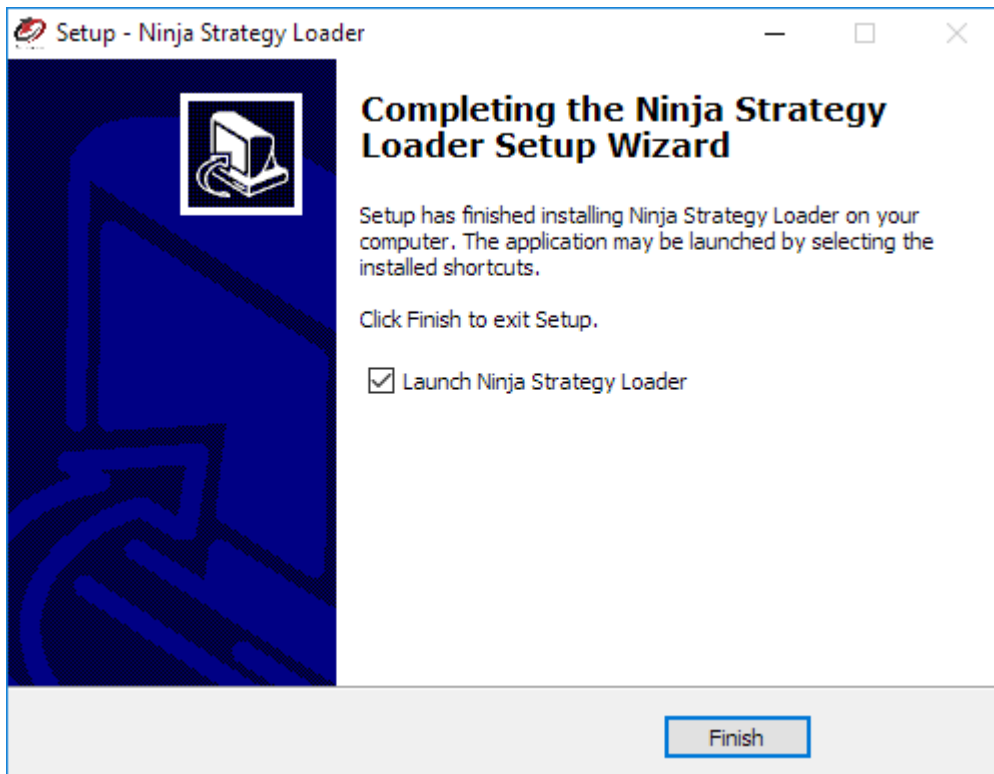
3. Ready to Install

- Click Install to continue with the installation, or click Back if you want to review or change any settings.



4. Completing the Setup

- Setup has finished installing Ninja Strategy Loader on your computer.
- Put a check on the box to Launch Ninja Strategy Loader after the setup.
- Click finish to exit Setup.



2. Download and install Microsoft Access database engine 2010 x64 bit

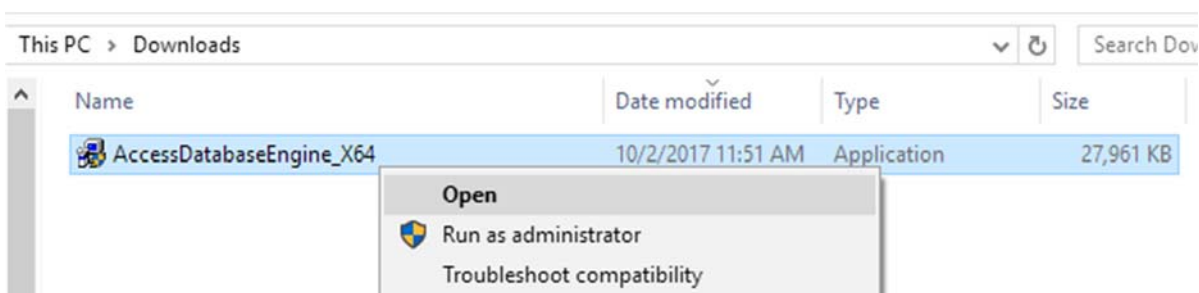
<https://www.microsoft.com/en-us/download/details.aspx?id=13255>

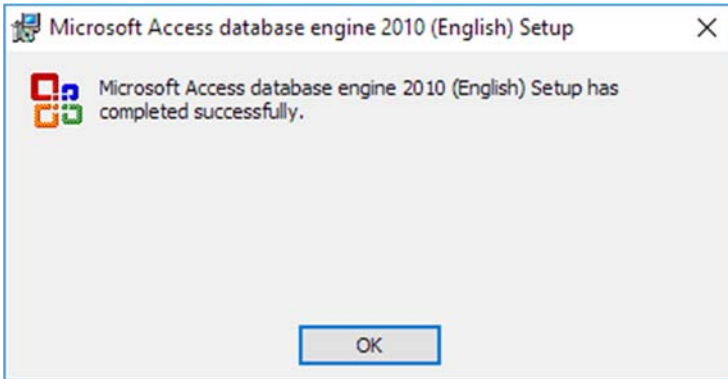
Note: Download and install only if not exist in your machine.

Microsoft Access Database Engine 2010 Redistributable



This download will install a set of components that can be used to facilitate transfer of data between 2010 Microsoft Office System files and non-Microsoft Office applications.

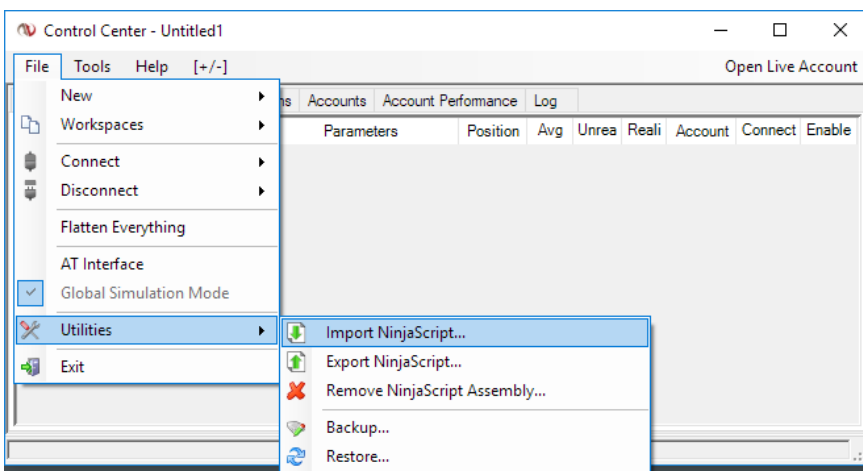




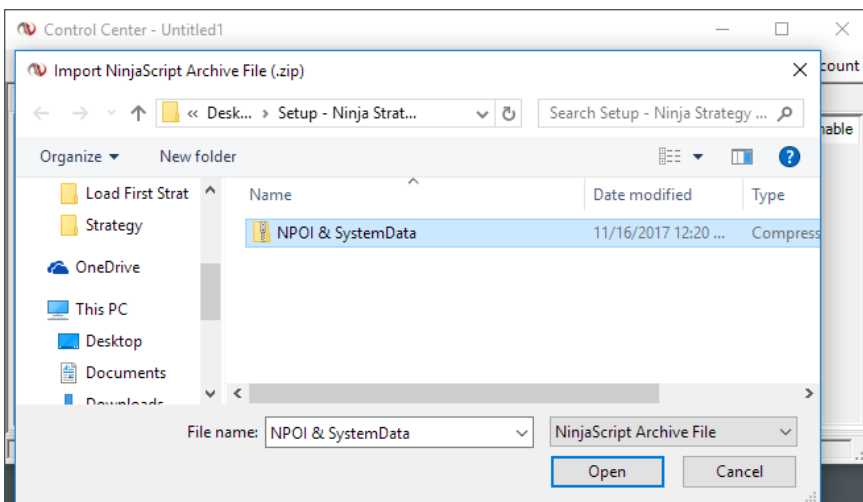
3. Importing NPOI & SystemData DLL's – Strategy Compatibility Tool

These are free DLL files that can be downloaded from web and are required for Ninja Strategy Loader... should be found inside in your downloaded **Setup – Ninja Strategy Loader.zip**

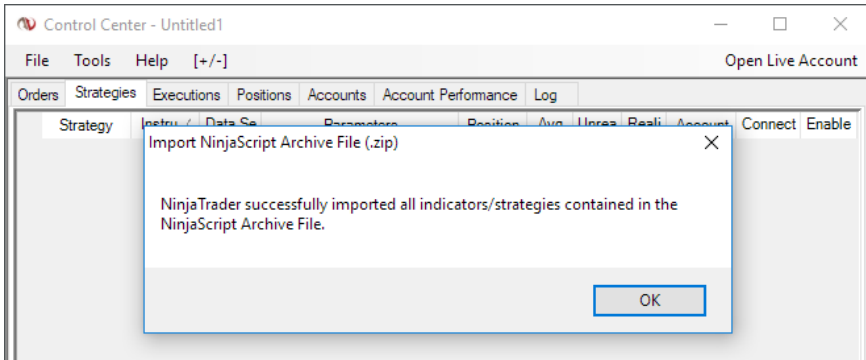
Open NinjaTrader Control Center. Go to File > Utilities > then click Import NinjaScript.



Browse the NPOI & SystemData zip file. Then, click Open to import.



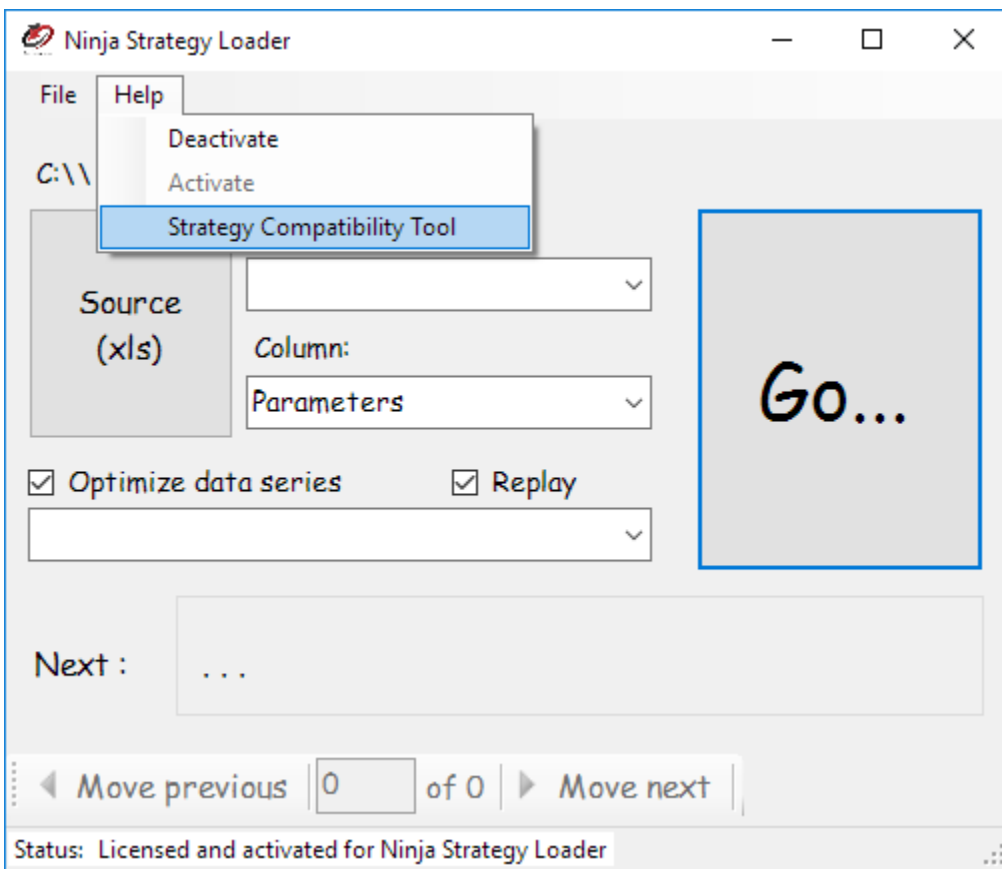
NinjaTrader successfully imported the required DLL files!... To continue, click OK.



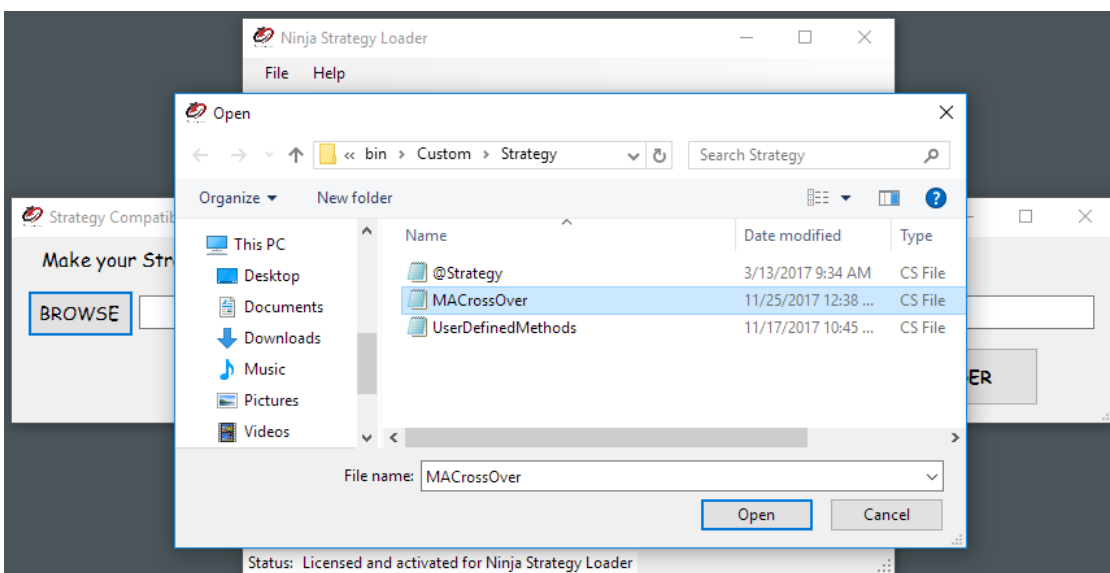
4. Strategy Compatibility Tool in Ninja Strategy Performance Module

The purpose is to make your open-source Strategy for NinjaTrader 7 compatible to Ninja Strategy Loader in just one go.

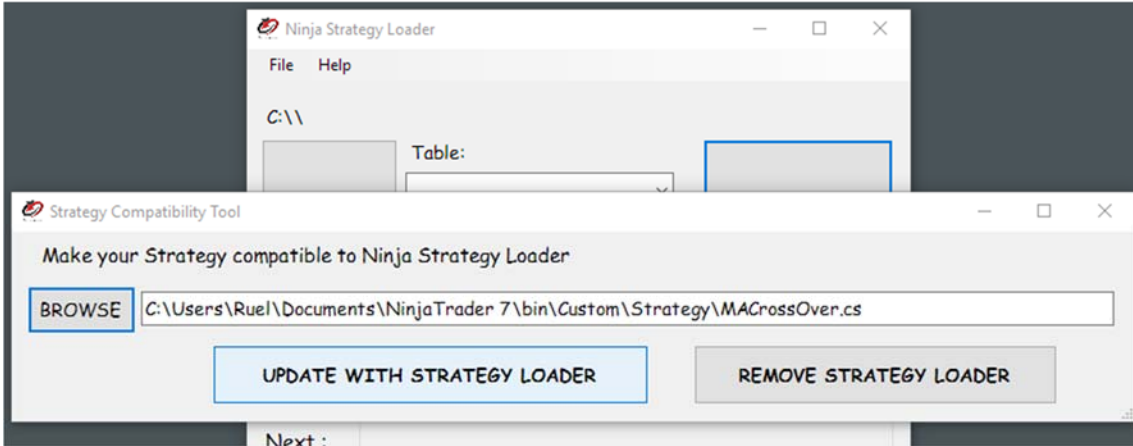
Open Ninja Strategy Loader. Go to Help, then select Strategy Compatibility Tool.



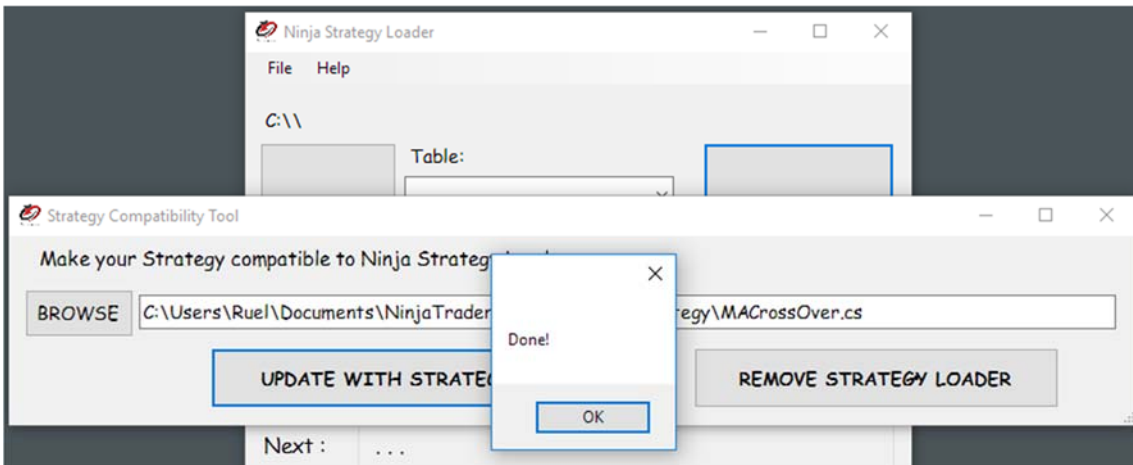
Browse your open source code file Strategy, select the file and click Open to continue.



Click Update with Strategy Loader to continue.

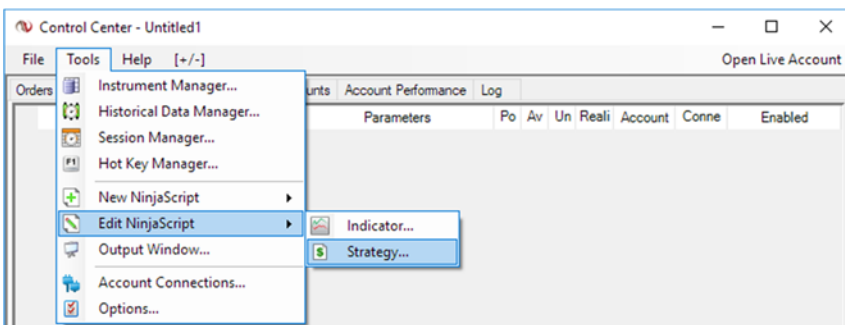


Successfully updated.

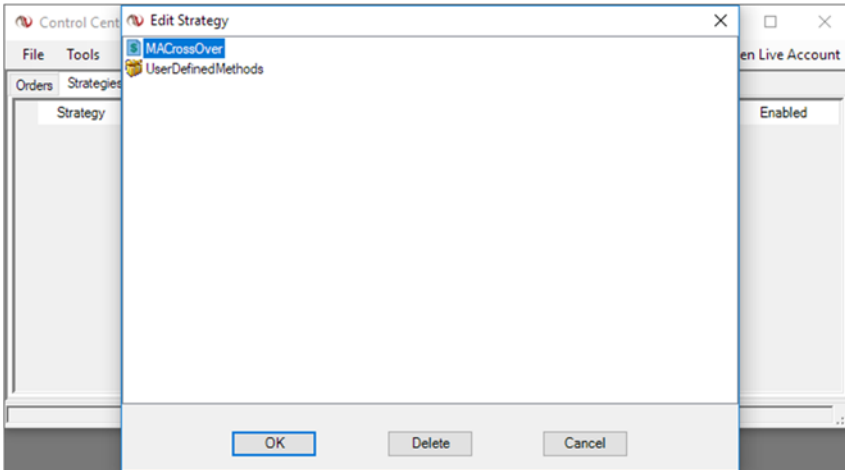


5. Compiling

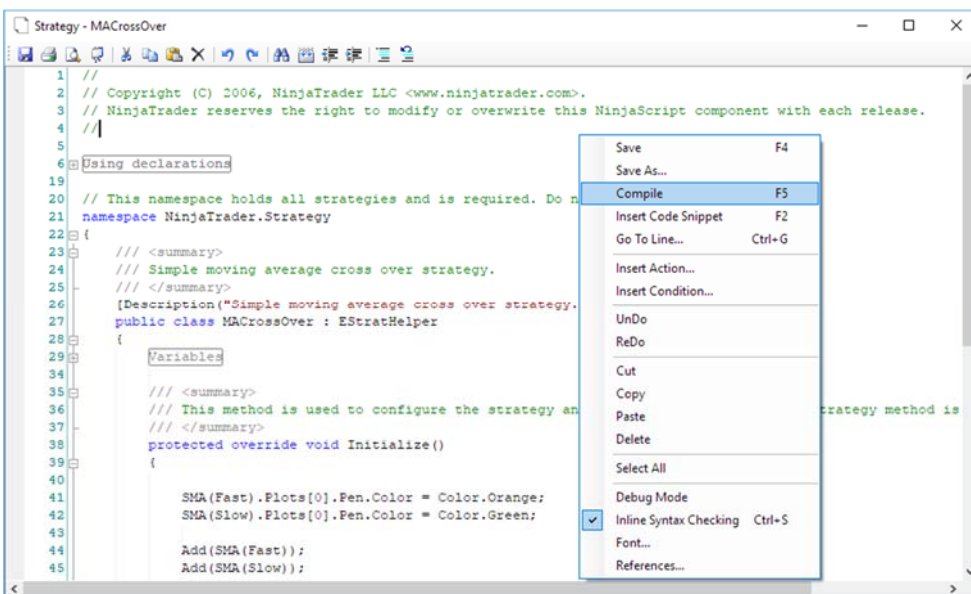
Go to Control Center, Click Tools > Edit NinjaScript > then select Strategy.



Select the file, then click OK to continue.



Right click and select compile.

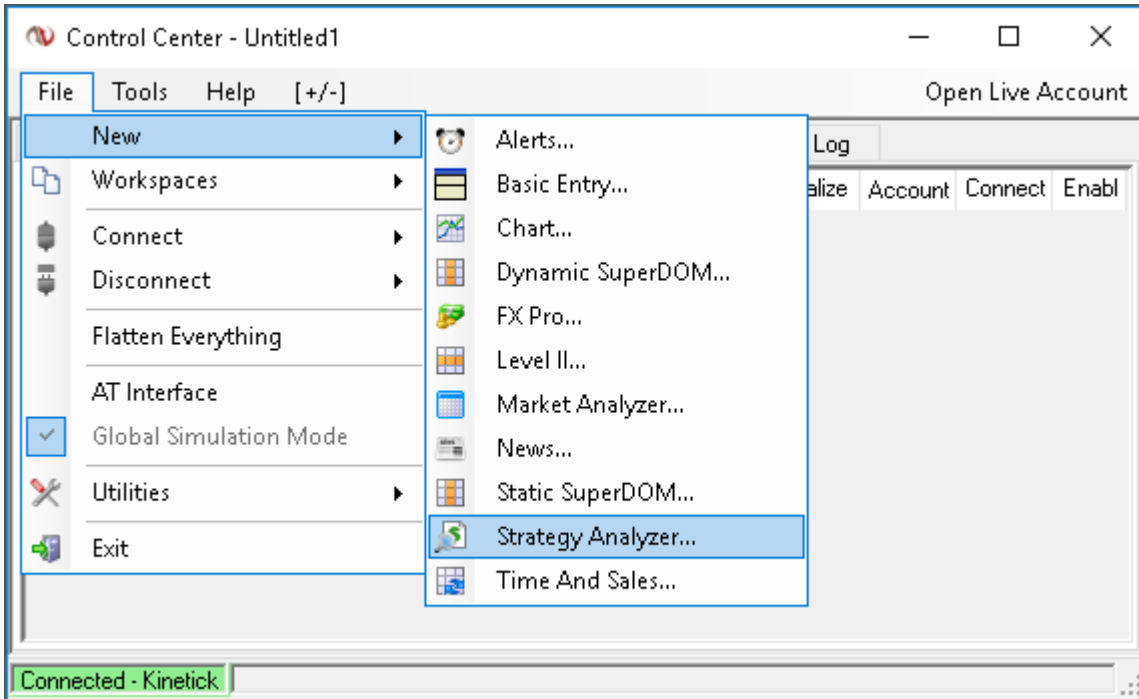


After compiling, your Strategy should now be compatible to Ninja Strategy Loader

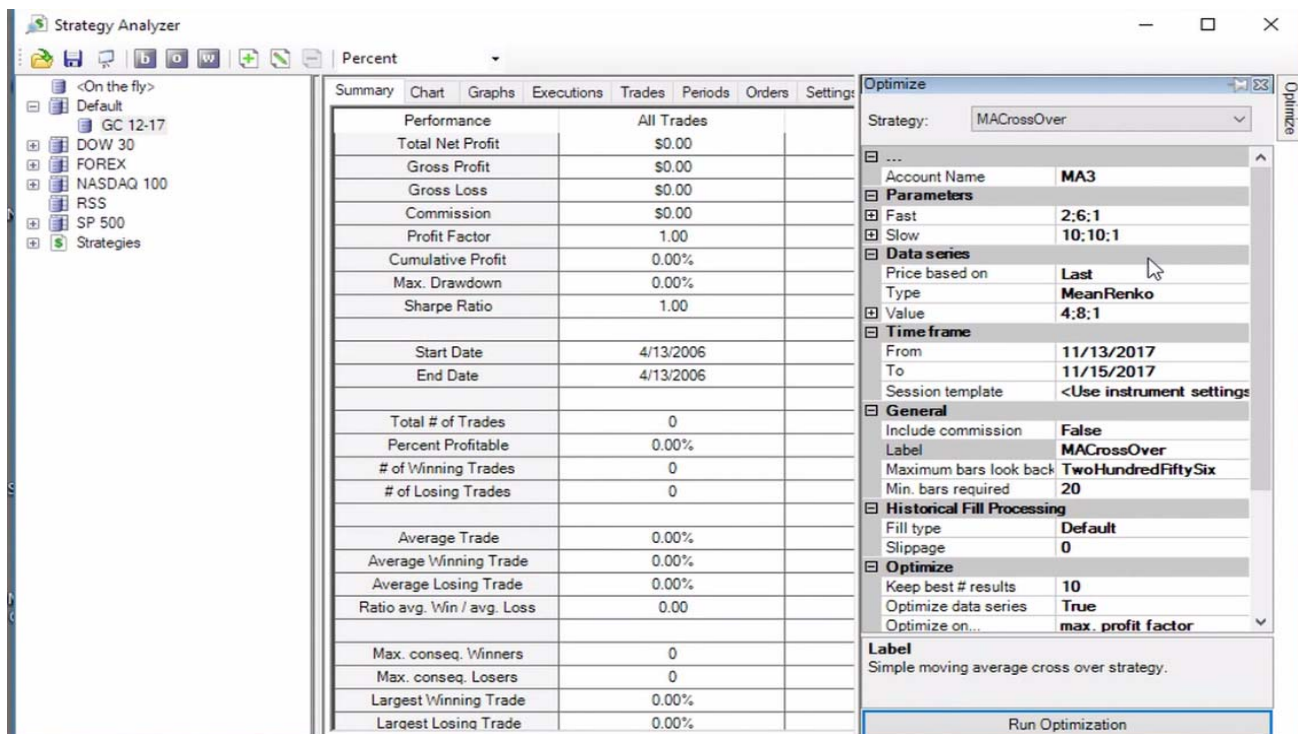
The following are examples and explanation on Ninja Strategy Performance

Step by step process on how to use Ninja Strategy Loader

1. **Optimization.** Please run Optimization in Strategy Analyzer and Save Optimization Results.
 - Select instrument and make sure to set “keep best # results” you wish to optimize.
 - a. **Setup connection**
 - Go to File > Connect > Kinetic
 - b. **Setup Strategy Analyzer**
 - Go to File > New > Strategy Analyzer



- Select instrument and click Optimizer on the top left button. Set parameters Minimum and Maximum range as well as the Increment, then Run Optimization.



Performance		All Trades
Total Net Profit		\$0.00
Gross Profit		\$0.00
Gross Loss		\$0.00
Commission		\$0.00
Profit Factor		1.00
Cumulative Profit		0.00%
Max. Drawdown		0.00%
Sharpe Ratio		1.00
Start Date		4/13/2006
End Date		4/13/2006
Total # of Trades		0
Percent Profitable		0.00%
# of Winning Trades		0
# of Losing Trades		0
Average Trade		0.00%
Average Winning Trade		0.00%
Average Losing Trade		0.00%
Ratio avg. Win / avg. Loss		0.00
Max. conseq. Winners		0
Max. conseq. Losers		0
Largest Winning Trade		0.00%
Largest Losing Trade		0.00%

- Save the results – Go to

Optimizer tab, right click on results ->Grid ->Export to Excel.

- Insert “StrategyID” column in your excel and fill in series. This will be a unique ID Of every strategy. Then, save.

MACrossOver Optimization Results [Compatibility Mode] - E

FILE HOME INSERT PAGE LAYOUT FORMULAS DATA REVIEW VIEW

Clipboard Font Alignment Number Condition Formatting

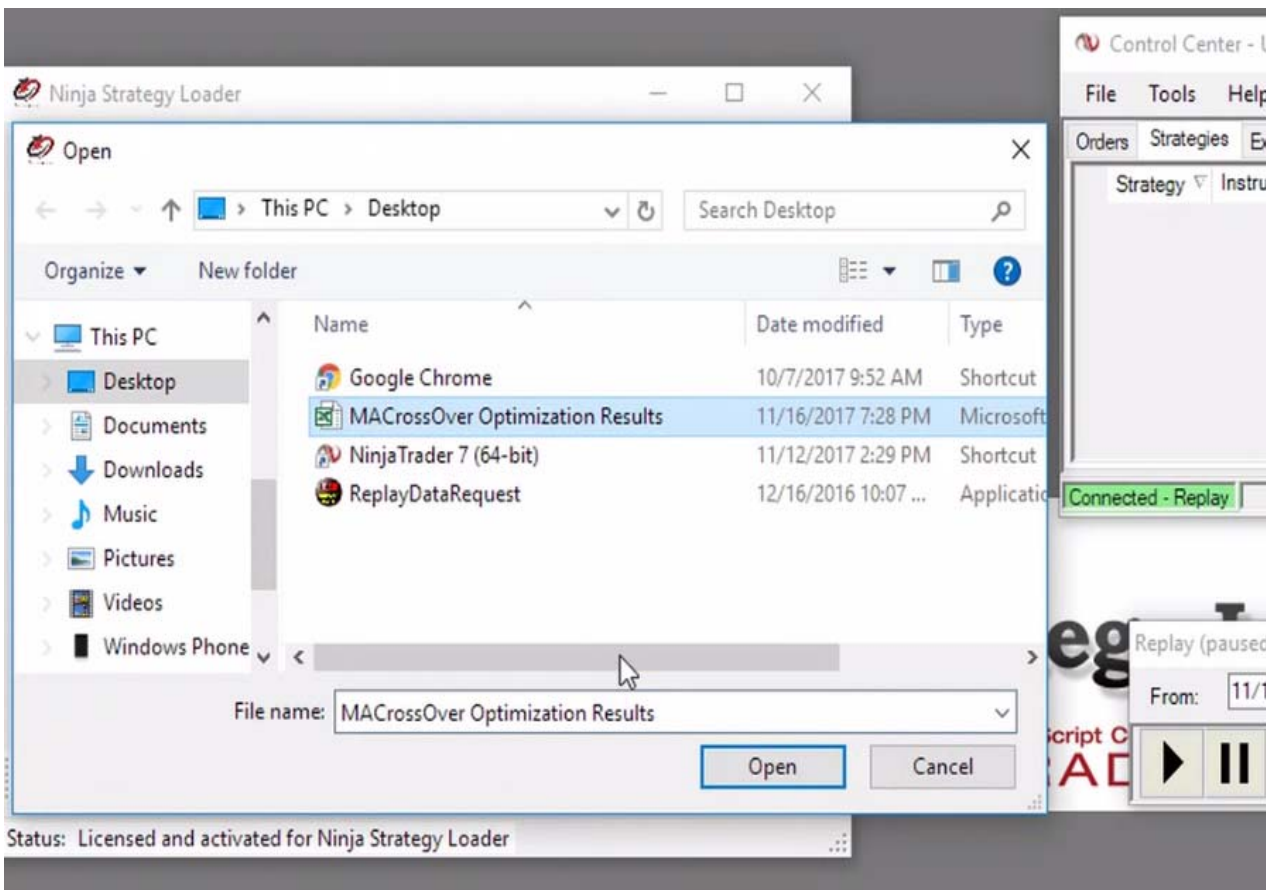
B2 MA1

	A	B	C	D	E	F	G	H	I	J	K	L	M
	Instrument	StrategyID	Performance	Parameters	Total Net Prof	Gross Profit	Gross Loss	Profit Factor	Cumulative Prd	Max. Drawdown	# of Trades	Percent Profitable	
2	GC 12-17	MA1	10.95	eriod/Fast/S	2190	2410	-220	10.954545	0.0172086	-0.000778	12	0.6666667	
3	GC 12-17	MA2	8.34	eriod/Fast/S	2130	2420	-290	8.3448276	0.0167249	-0.000933	12	0.5833333	
4	GC 12-17	MA3	6	eriod/Fast/S	2350	2820	-470	6	0.0184907	-0.001409	16	0.6875	
5	GC 12-17	MA4	5.48	eriod/Fast/S	1970	2410	-440	5.4772727	0.0154447	-0.001328	11	0.4545455	
6	GC 12-17	MA5	5.06	eriod/Fast/S	2110	2630	-520	5.0576923	0.0165794	-0.00172	15	0.6	
7	GC 12-17	MA6	5.02	eriod/Fast/S	2170	2710	-540	5.0185185	0.0170591	-0.001399	20	0.6	
8	GC 12-17	MA7	4.96	eriod/Fast/S	1940	2430	-490	4.9591837	0.0152047	-0.001493	11	0.5454545	
9	GC 12-17	MA8	4.9	eriod/Fast/S	2030	2550	-520	4.9038462	0.0159438	-0.001407	15	0.6	
10	GC 12-17	MA9	4.22	eriod/Fast/S	2220	2910	-690	4.2173913	0.0174627	-0.001717	20	0.6	
11	GC 12-17	MA10	4.14	eriod/Fast/S	1790	2360	-570	4.1403509	0.0140169	-0.001728	11	0.4545455	

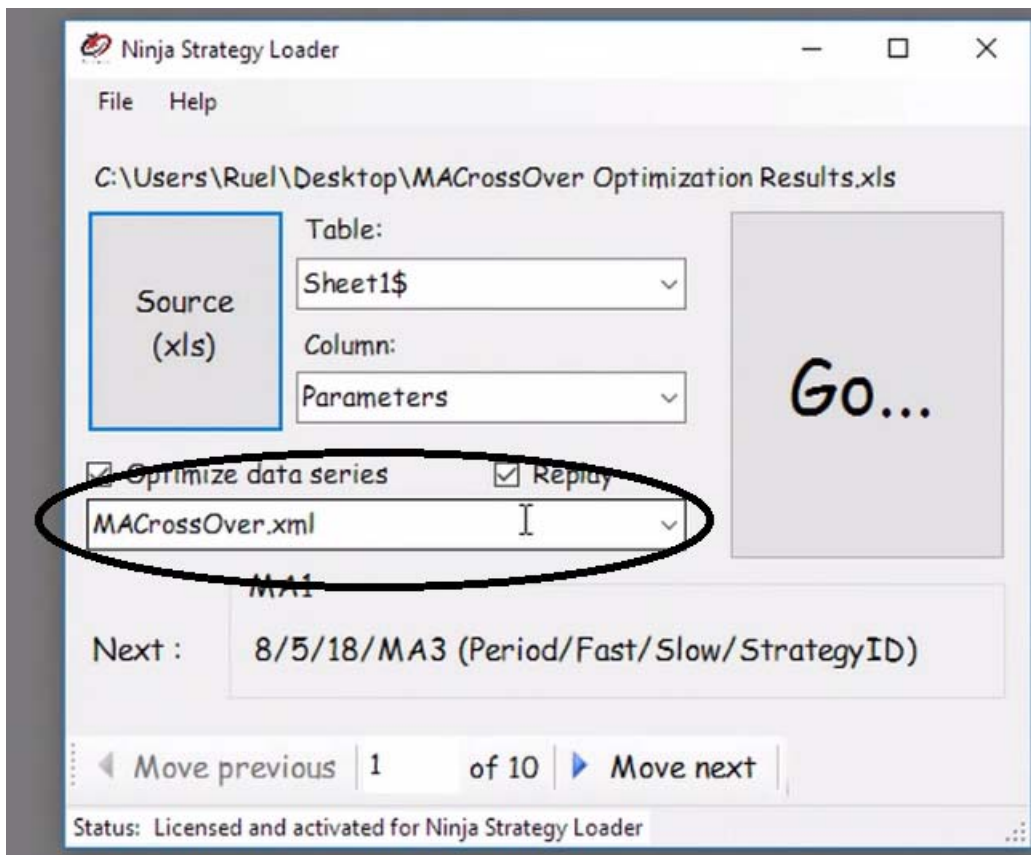
2. Open Ninja Strategy Loader

a. Load Excel File resulted from optimization

- Load the Excel file by clicking the Source (xls) button, then find your excel file, and click open.

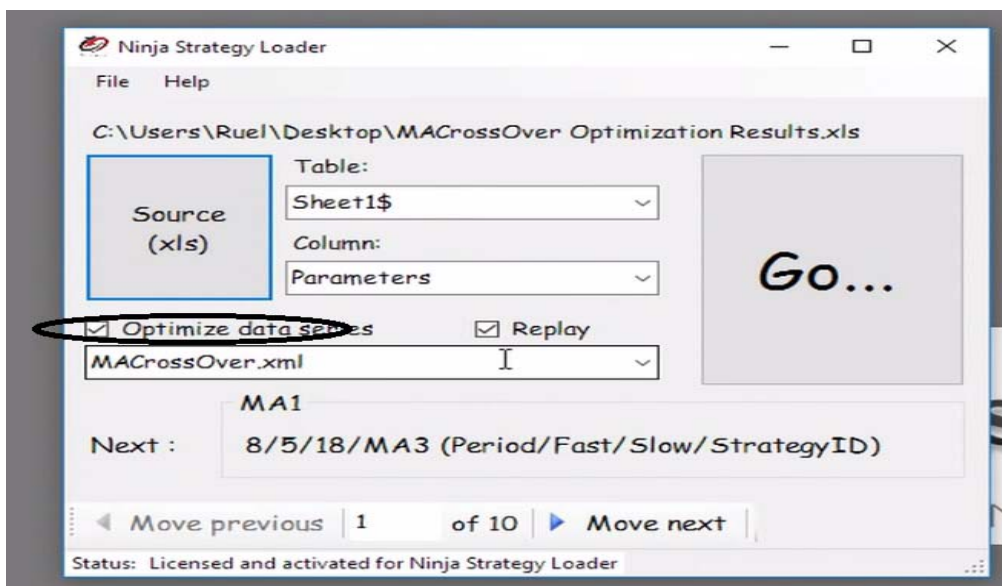


- Select your Strategy.



- You can also jump to specific rows by typing the number in the box between Move previous and Move next.

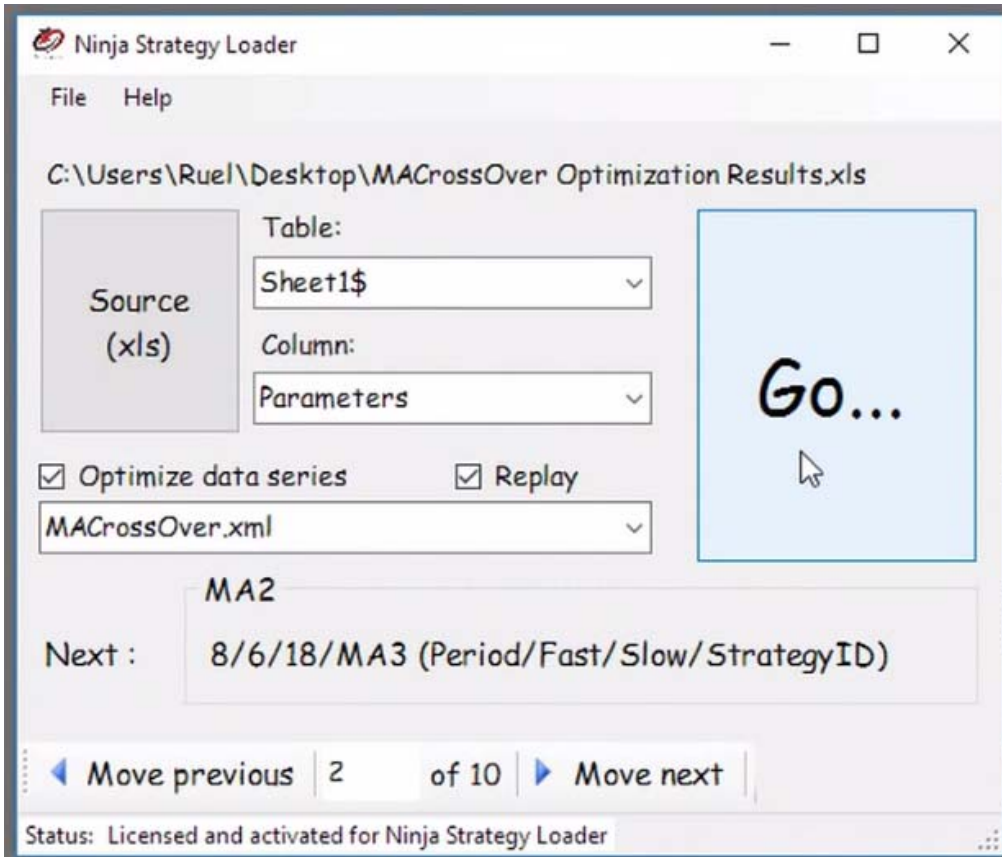
- Optimize data series. Leave it check to optimize data series.



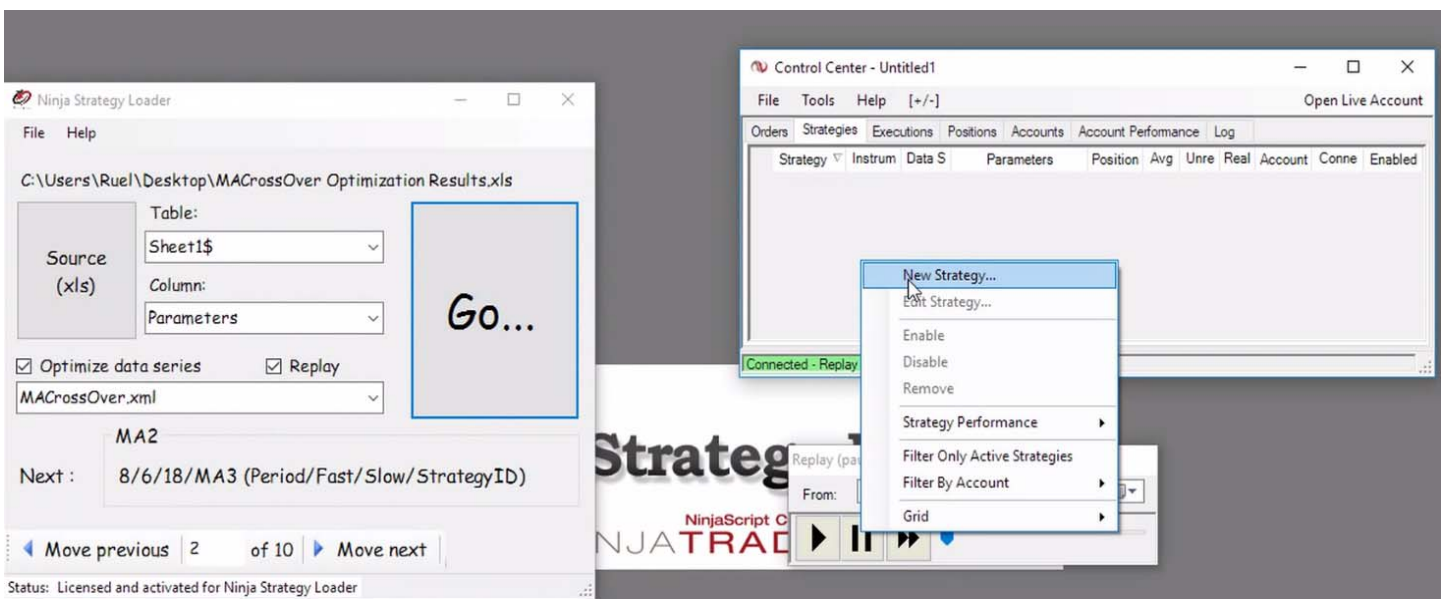
- If you are running Market Replay, please check Replay box.
- Go button – Click go to load data. (Then, it automatically moves on the next Strategy.)

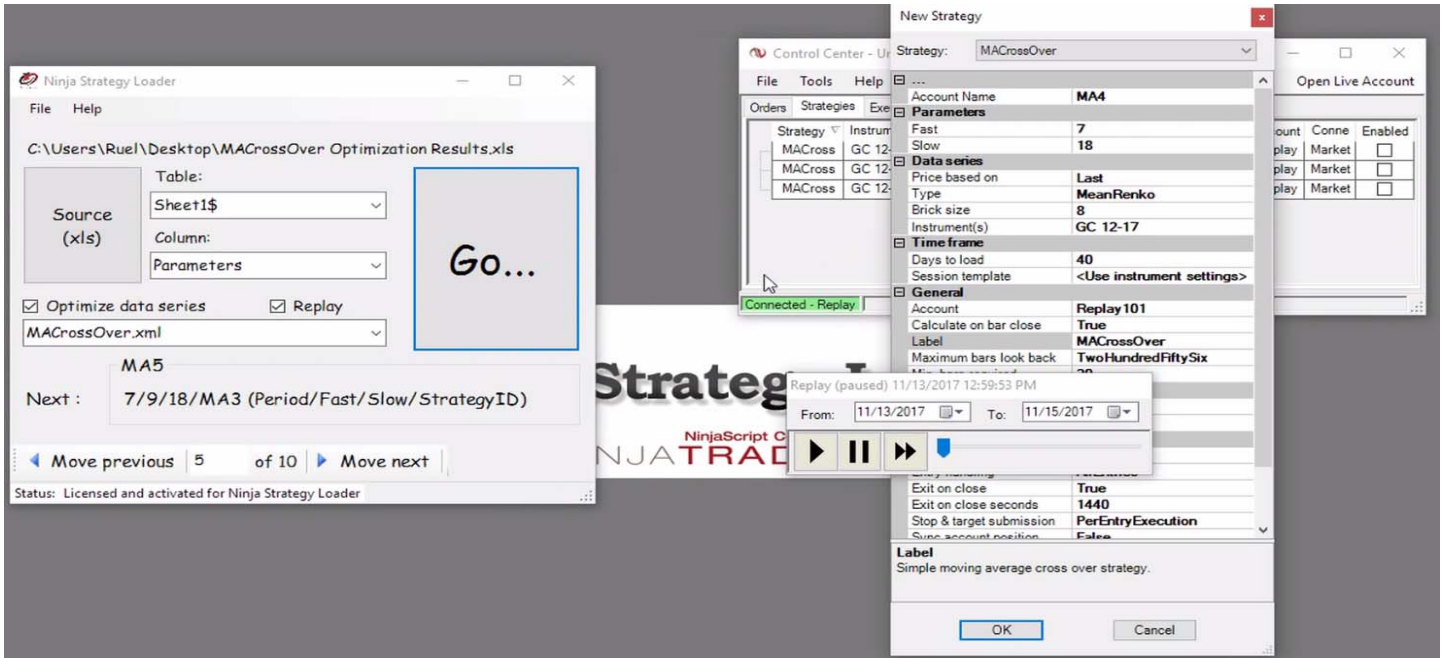
Ninja Strategy Loader

For NinjaTrader



- Go to NinjaTrader Control Center - Right click on Strategies tab. Click New Strategy, then click OK.





b. Load each values. Repeat the process...

- Click Go button on Ninja Strategy Loader.
- Right click on Strategies tab.
- New Strategy
- Click OK or press Enter key.

