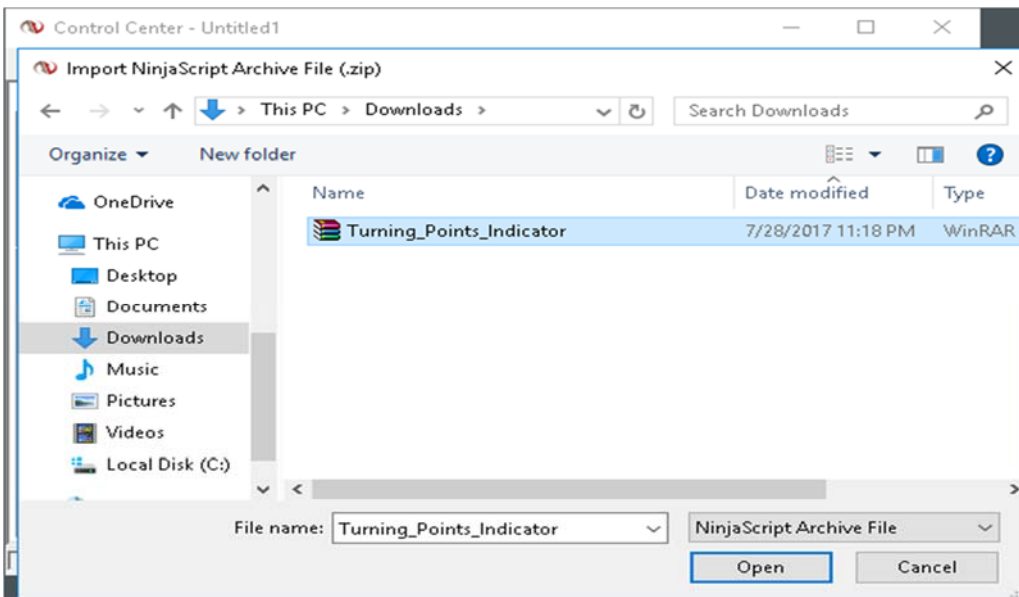
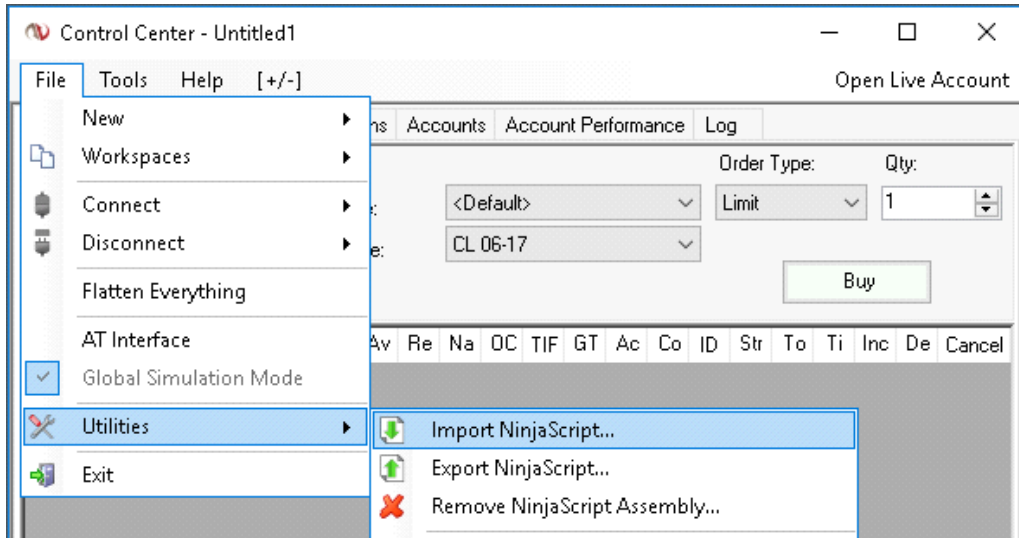
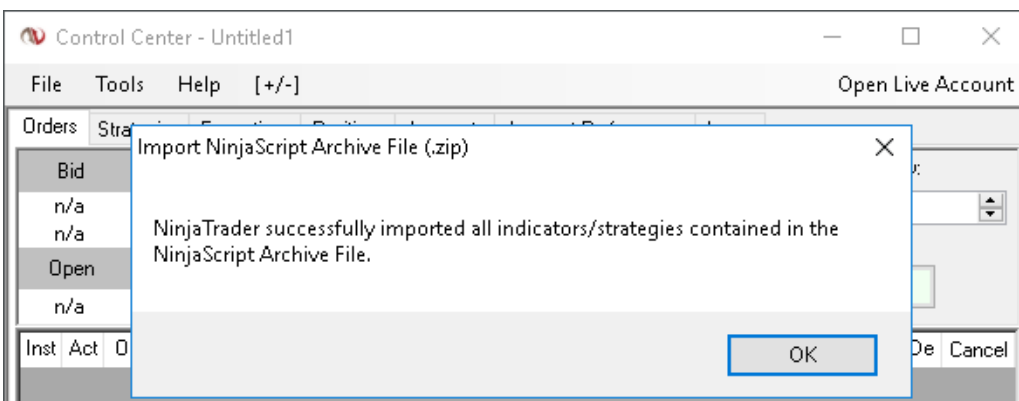


## How to Install Turning Point Indicator System

**Open NinjaTrader.** Go to File > Utilities > then click Import NinjaScript. Find Turning Points Indicator, then click Open to import.



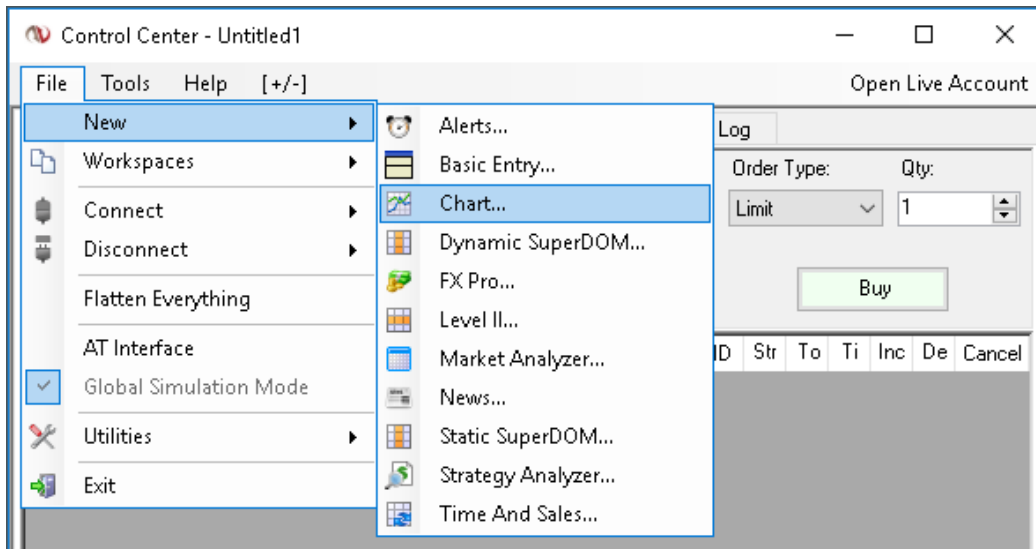
- NinjaTrader successfully imported all indicators... To continue, click OK.



## How to use Turning Point Indicator System

Go to NinjaTrader - Control Center.

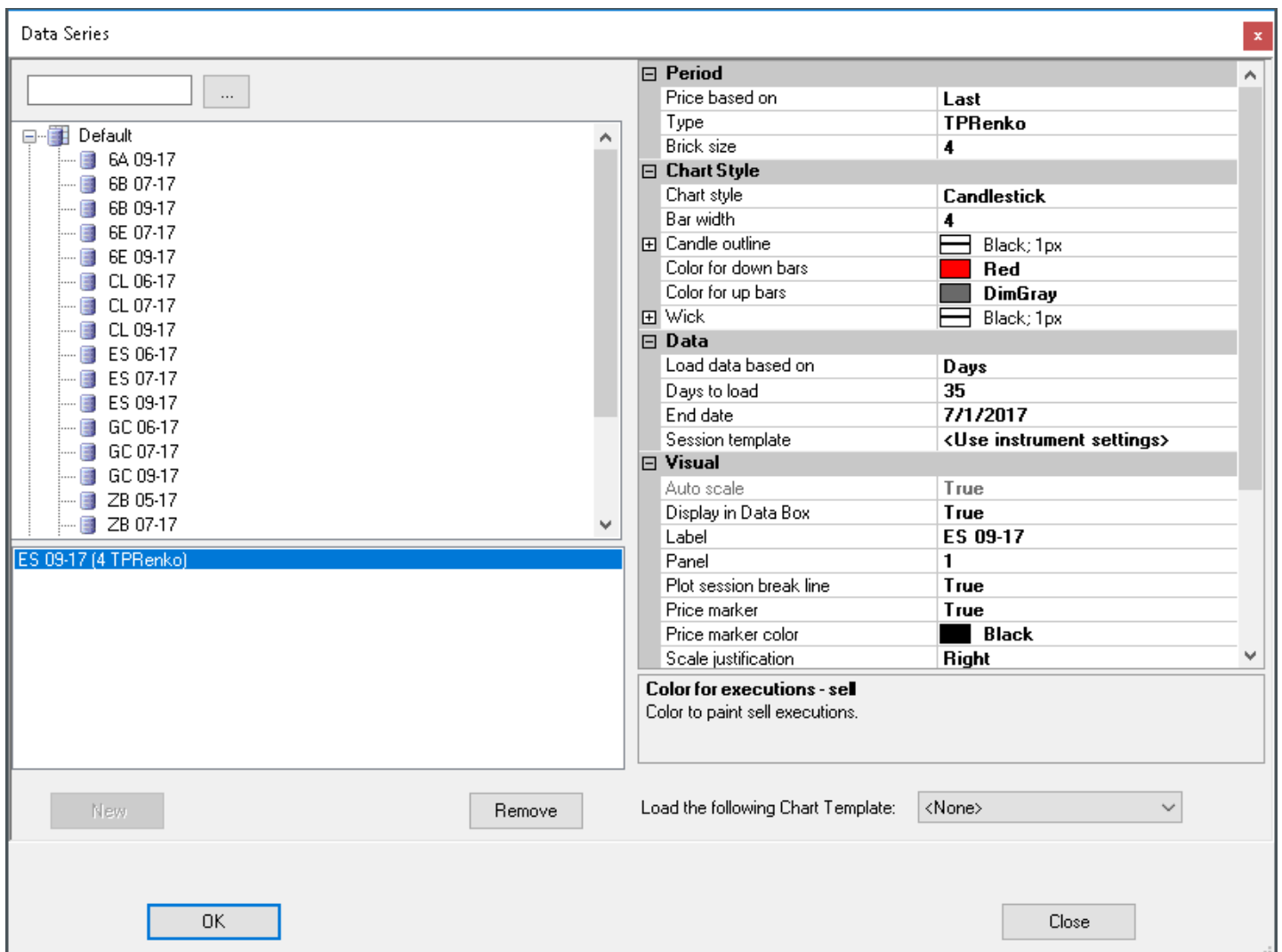
- Go to File > New > then click Chart.



### Indicator Setup Variables

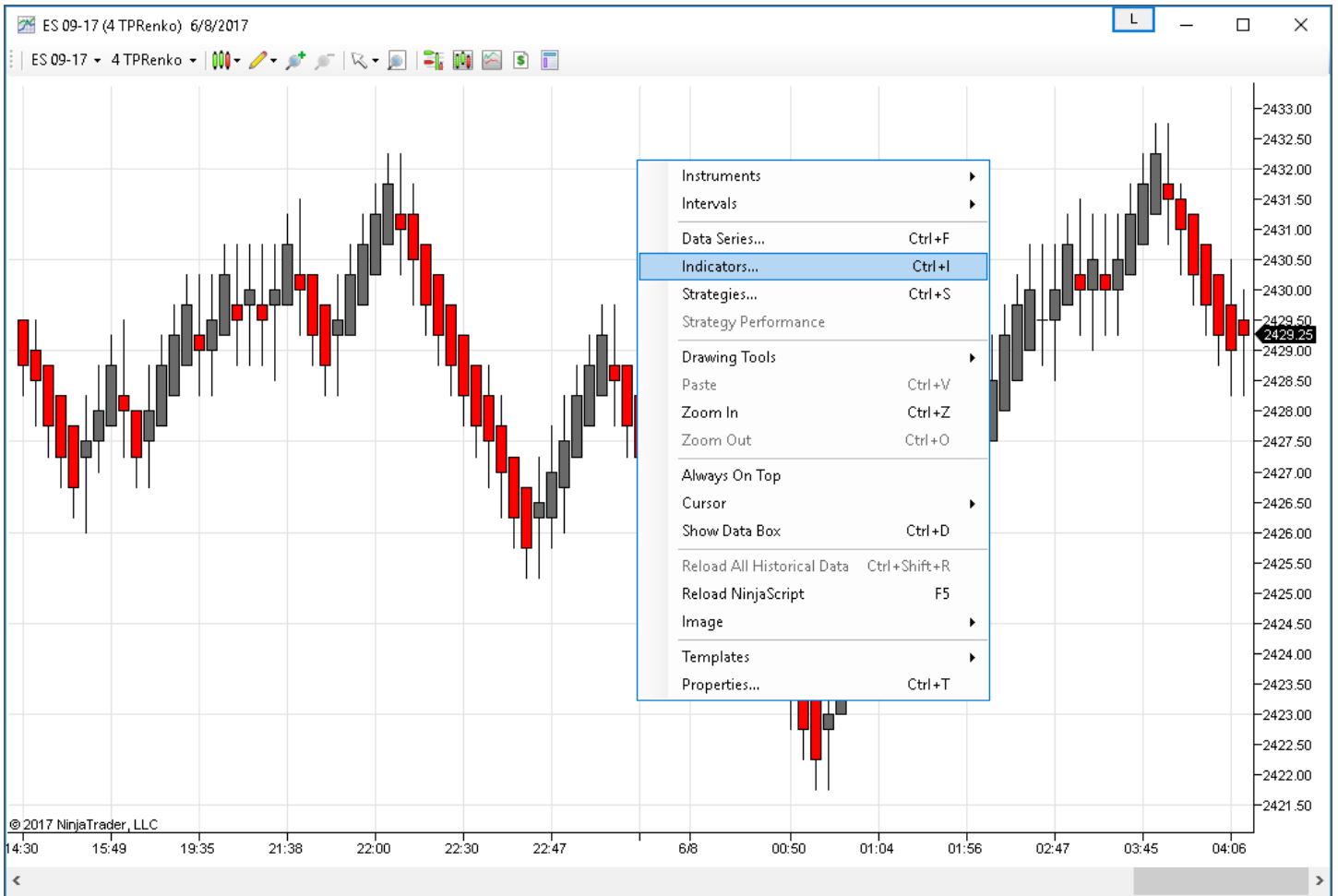
#### Turning Point – TP Renko Bar

- Add instrument/s. Set, then click OK to continue.

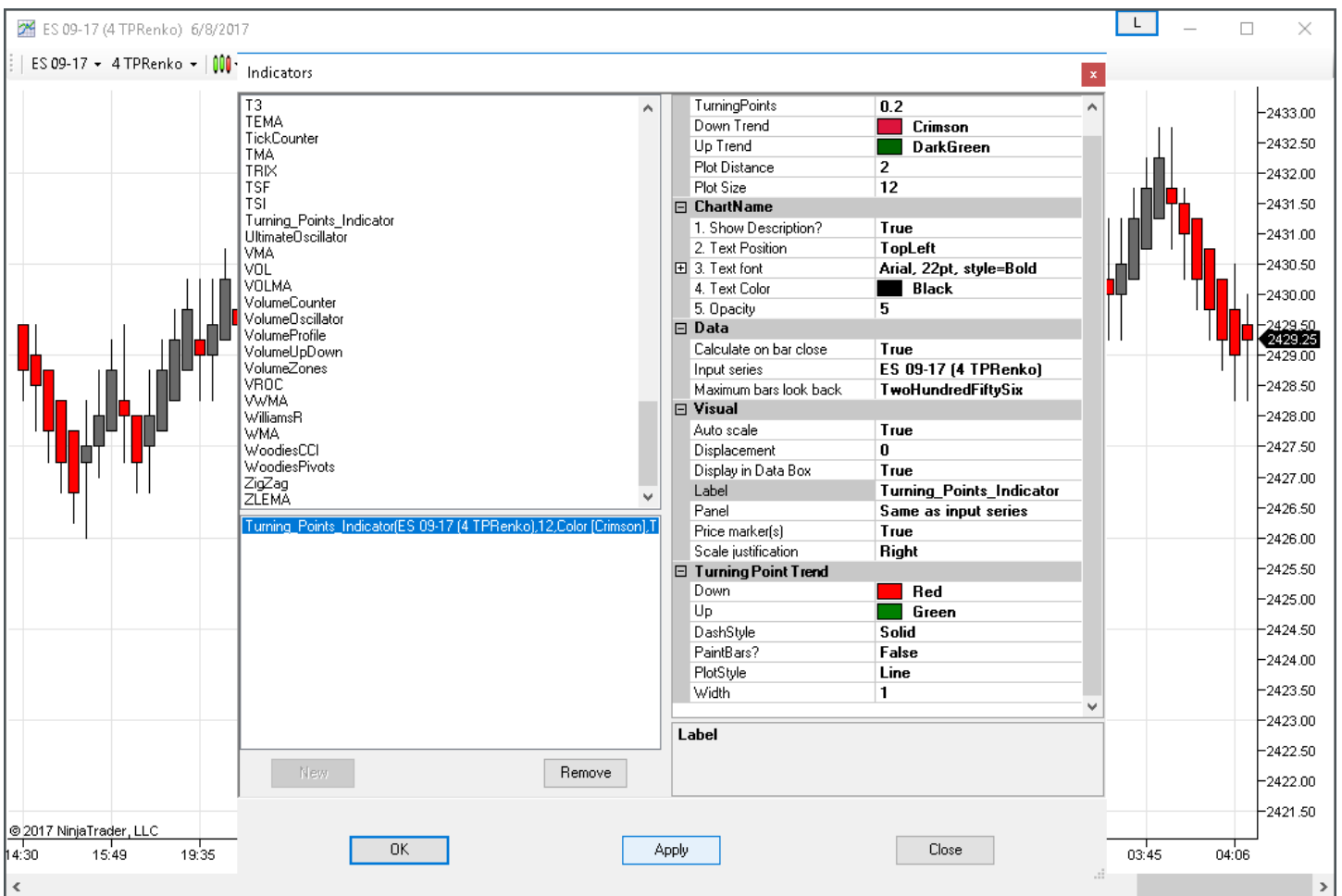


## Turning Point Indicator

- Add Turning Point indicator - Right click on chart and select Indicators...



- Select Turning\_Points\_Indicator and click Apply then click OK to continue.





# Ninja Turning Point Indicators

For NinjaTrader



## Discretionary Manual Trading System

### Simple 3 Point system

- **Turning Point Renko Bar** – Average / Mean Renko Bars – TPRenko
- **Turning Point Trend Indicator** – Shows potential Turning Points
- **Turning Point Trend Indicator** – Trend Following system that gets in late and out late but holds a position through long trades without getting out early

A trade is made when there are two (2) factors present in a particular order.

1. There is a turning point signal which predicts a change in trend.
2. There is a change in trend direction from short (red) to long (black).

#### Signal 1 – Change in trend turning point.

Marked with an arrow and direction of change to black up arrow (long).



#### Signal 2 – Change in trend line signal

Unmarked with a visual change from red (short) to black (long).



# Ninja Turning Point Indicators

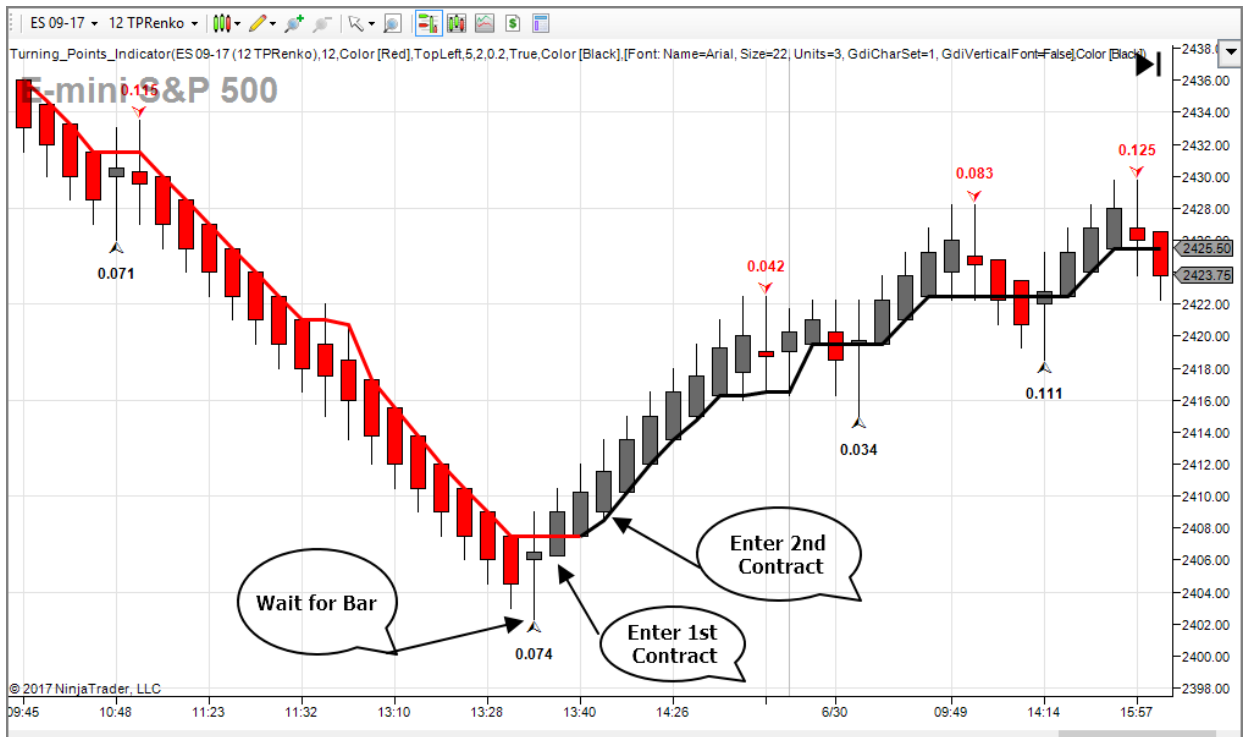
For NinjaTrader

## Ways to trade

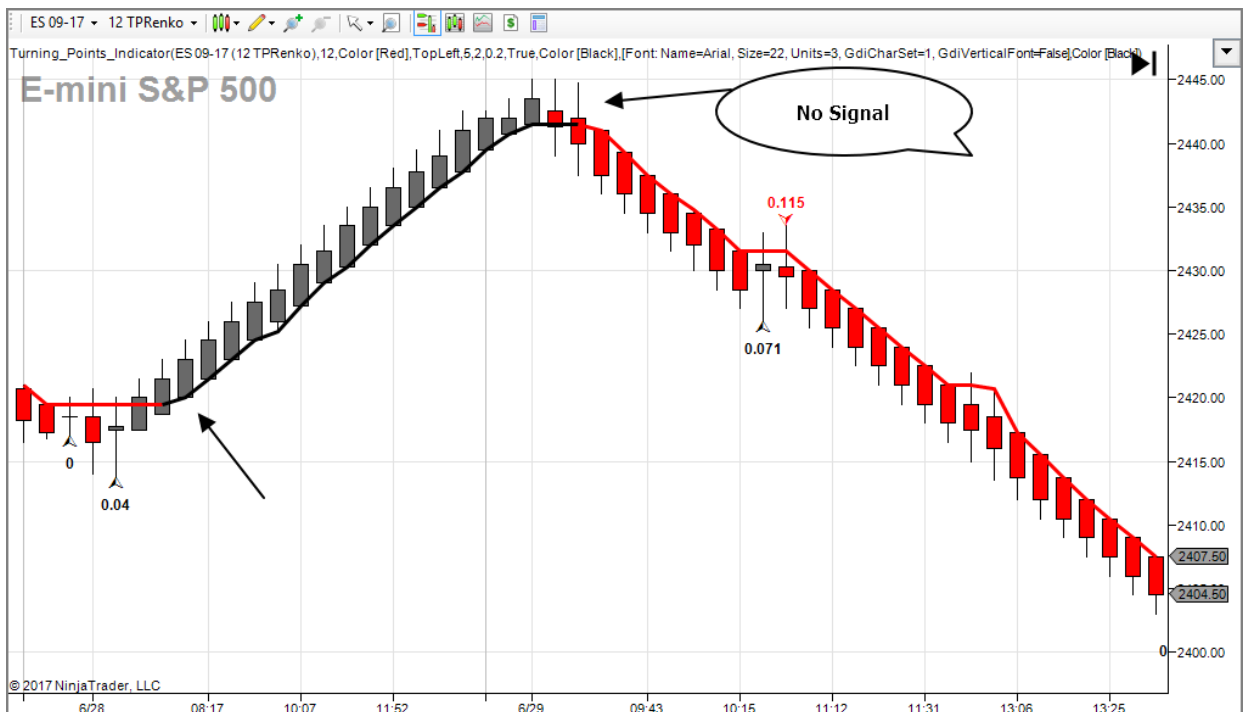
There are a couple ways to trade this indicator.

**Aggressive** – enter first contract after the creation of the trend change up bar. Enter the second contract after the true second signal with the change in trend from red (short) to black (red).

**Conservative** – wait for first Turning Point Bar changing direction and then enter when the trend line signal turns from red to black (long).



Sometimes – there is a major turning point and no Turning Point signal. Oh well – don't take it. Wait for the signal.



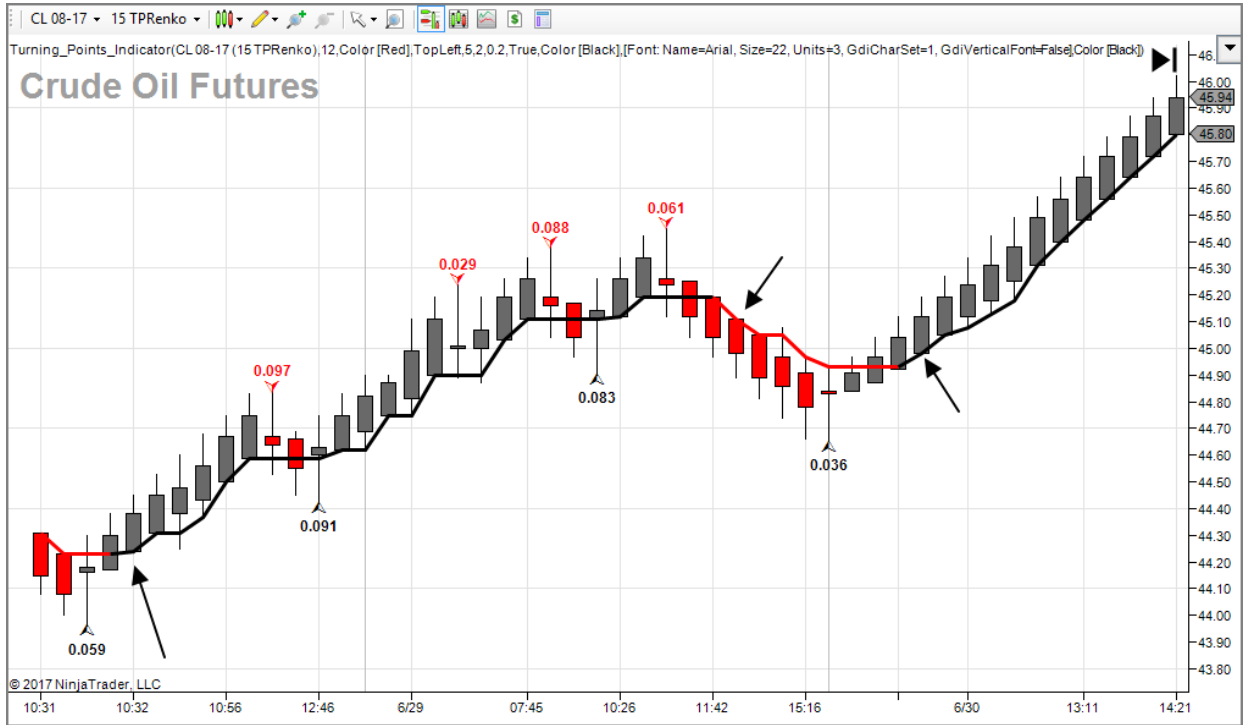
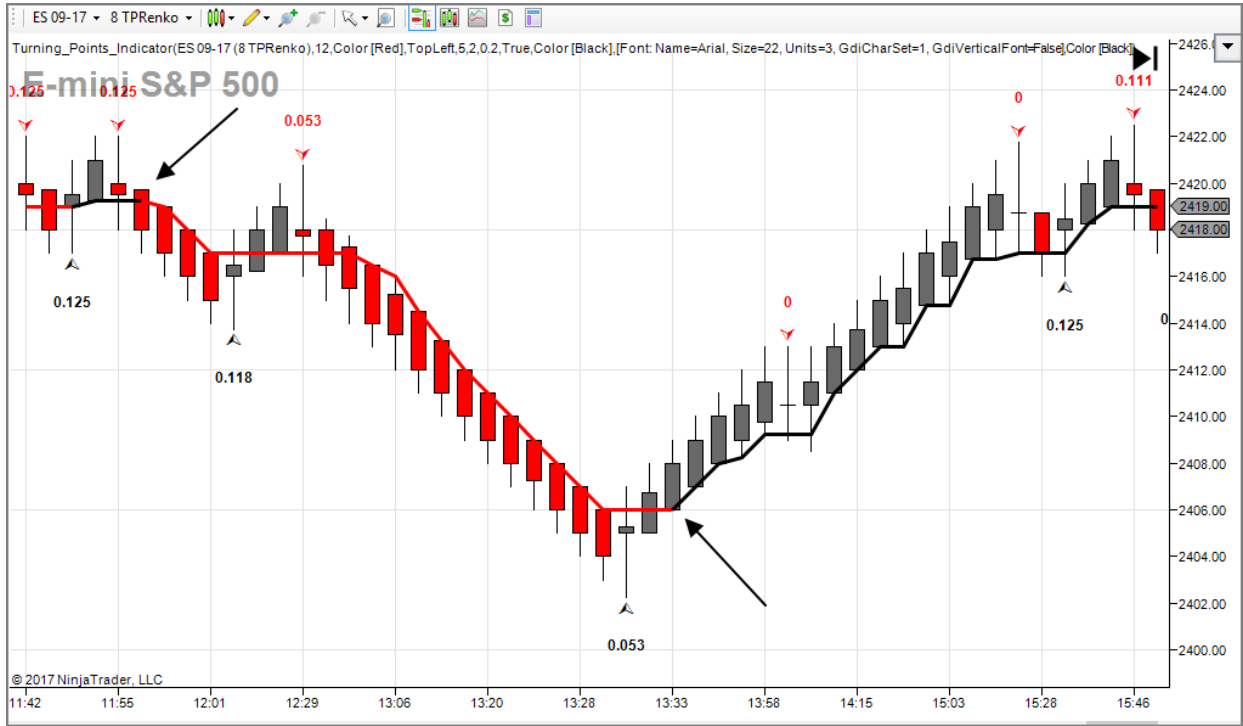


# Ninja Turning Point Indicators

For NinjaTrader

## Examples of Trades

### Turning Point Indicator System – Manual Discretionary System





# Ninja Turning Point Indicators

For NinjaTrader

